

Activity: Sketching

Concept: Shape, colour and shadows

Aim:

- To create a still life picture
- To replicate the colours on a piece of fruit
- To recognise and sketch shadows



Paul Cezanne (1839-1906)

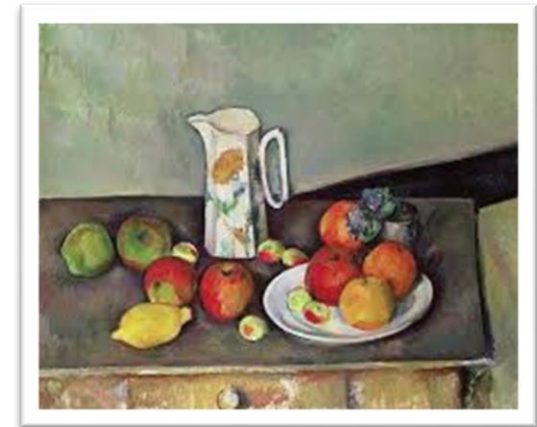


About the artist

Paul Cezanne was a French artist, born into a wealthy family in 1839. Cezanne moved to Paris to become a painter and was inspired by the work of Picasso and Matisse. Cezanne painted slowly, believing that he needed to truly observe and understand his subject matter before he could capture the moment with a brushstroke. A typical portrait might take him over one hundred working sessions to complete.

Cezanne painted a range of different subjects during his career, including landscapes, still life and portraits. He painted over 900 oil paintings and over 400 watercolour paintings. He used small brushstrokes to build up the picture slowly and delicately.

Can you match the three pictures to the style of painting?



Still Life

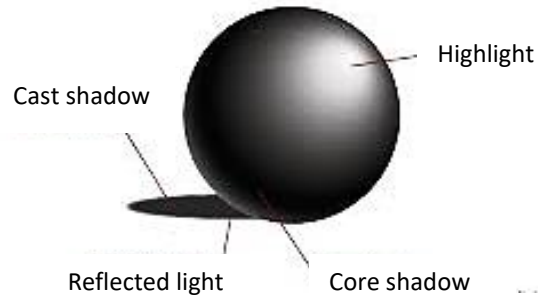
Landscape

Portrait



Colour

Look closely at an apple and you will see that there are light and dark tones of colour. This is because a light source is illuminating the apple. The light source 'hits' the apple creating a highlight. On the opposite side it casts a shadow.



Label the picture with the correct terms: ***Highlight***

Core Shadow

Cast Shadow





Skills Practice

Drawing fruit is a really good way of practising important art skills. Look at a bowl of fruit, you will see lots of different shapes, colours, lines and tones. Let's explore these in more detail.

Shape

Many fruits are very similar to a sphere. To practise this, draw some circles below. Press lightly with your pencil. You might find it easiest to start by drawing one half of the circle and then the other half. Or try drawing a circle by using lots of small lines (taking your pencil off the paper) instead of one continuous line.

Line

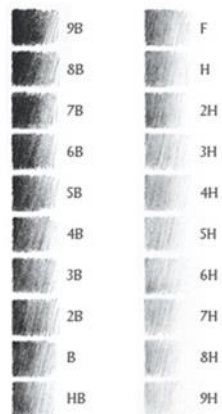
Look at the lines on this apple. Which direction are they - horizontal or vertical?



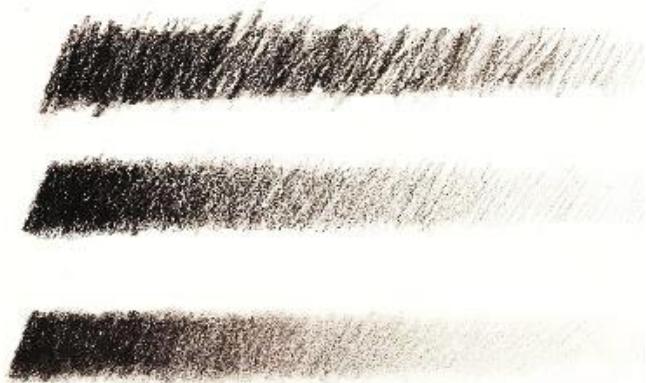


Tone

Tone is a way of referring to the lightness or darkness of colour. Sketching with pencils allows us to create different tones. A pencil with the letter 'H' at the end will produce a light tone. A pencil with a 'B' at the end will produce a dark tone. Pick a sketching pencil, shade a small area and note down which grade it is.



Now try experimenting by using just *one pencil* to practise shading from dark to light. Try a grey pencil first, then try a coloured pencil.





Still Life Sketching



You will need:

- Paper
- Drawing pencils
- Coloured pencils
- Apples

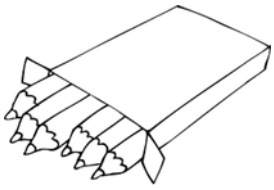
What to do:

1. In this lesson we are going to build up colour slowly. This means we will start by pressing lightly with a pencil, gradually pressing harder to produce darker tones as we create the picture. So, start by very lightly drawing the outline of the apple.
2. Now, find the highlight and the shadow. Lightly shade the shadow and note where the highlight is. The highlight should have little or no colour.
3. Select the colours you will be using. Will you need red, green, yellow, orange or brown?
4. Now start to shade in your apple. Start with the lightest colour, such as yellow. Use **vertical** pencil strokes, press lightly and shade in the lightest part of the apple (the side where the light hits), pressing firmer on the side of the apple where the shadow is.
5. Build up the colours, adding orange and brown tones and then finally add some green and red, pressing firmer to shade in the **core shadow**.
6. Shade in the cast shadow, the shadow will be darker by the base of the apple, becoming lighter as you get further away from the apple.

Reflect and Improve

It is good practice to reflect and improve on your work throughout the drawing process. Hold your picture at arm's-length or sit back so that you can see it from a distance. Have you shaded the core shadow and the cast shadow? Are the colours accurate?

7. Next time you draw make it trickier by drawing two pieces of fruit next to each other.



Add a shadow to each of these drawings.

Extra Art

